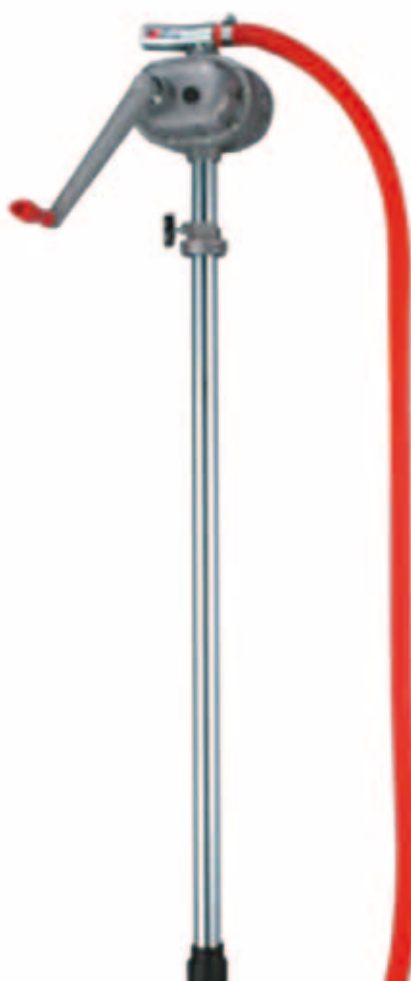


Rota Ry Refuelling pump type Hp 1000



user's manual

HP100

Hight volume rotary refueling pump

*A hight volume manually opertad rotary action pum that delivers up to 100 L per minutes. It is designed for refueling of both on and off road vehicles and large machinery. The simple design allows easy servi-
cing if required. The pump comes complete with delivery hose and includes a replaceable filter.*

Spe Cifi Ca tion S

Uses : fuels and low viscosity oils up to SAE-30
 Discharge quantity : 1 litre per rotation, 100 l/mn
 Materials: Cast aluminium, Buna N seals
 Weight : 6 Kg
 Suction pipe : Ø 32 mm ; 1,6 m
 Delivery hose : Ø 32 x 1275 mm lenght
 Vertical conveying distance : 15 m max
 Horizontal conveying distance : 50 m max
 Filter : 250 microns / 60 mesh

o peRa ti ng in St Ru Ct ionS

o il gears before use

Before using the hight volume retary refuelling pump,
 make sure that you fill the gears cover with oil. **Fill it with
 SAE 30 oil** or equivalent to the reference line through
 the lubrification bolt hole (as indicated on the diagram).
 Inspect periodically

Revolution direction

The handle turns in a clockwide direction and the pump
 discharges onr litre per one revolution of the handle.

f ilter

A filter of 60 mash polyethylene net is satndard on the pum and its located at the bottom of the suction
 pipe. Rotating the handle and therefore operating the pump may become harder if the filter is clogged
 with impurities that have beem filtered out of the fuel or low viscosity oil. Remove the filter periodically
 and clean it with kerosene.

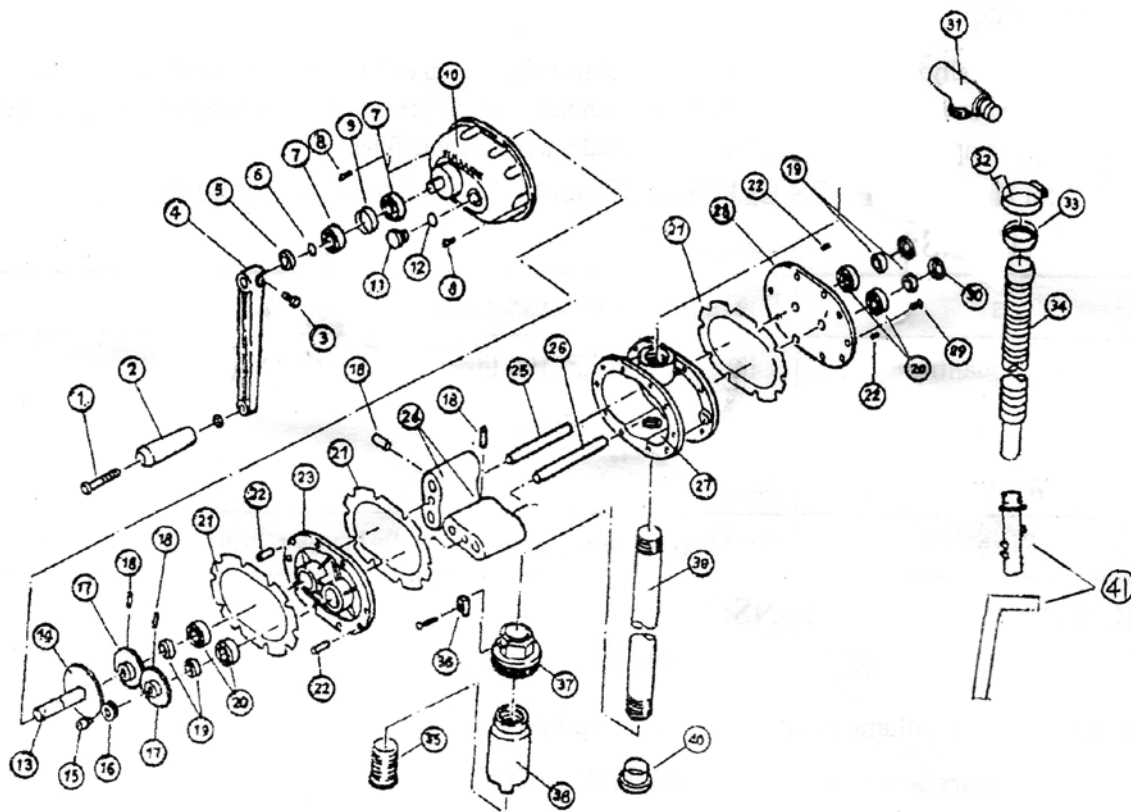
Caution

Suitable liquids include most low visosity liquids such as unlead petrol, kerosene and low viscosity oils.
 Altought the pump can be used to pump other liquids with high viscosity, the pump becomes harder to
 operate and doing so will shorten the life of the pump and may void warrantly.
 Do not use this pump for any solvent or chemical transfer as these liquids will dissolve the buna N
 Gaskets...
 Do not pump liquids containinge dirt or particules such as waste oil. Stained liquids may block the filter,
 preventing discharge, and damage the pump interior or cause other trouble.

t Rou Ble SHoo ting

Handle fails turn	Gears broken : return for repair. Dirt clogging up the pump : overhaul and clean
Handle is hard to turn	Dirt clogging up the pump : overhaul and clean Filter blocked : clean the filter
Handle turn, but no discharge	Gears, shaft or pin is broken : return for repair

pa Rt S an D eXpl o DeD Dia g Ram



PARTS NO.	DESCRIPTION	QTY	PARTS NO.	DESCRIPTION	QTY
1	Handle rivet	1	22	Taper pin	4
2	Handle	1	23	Inside cover	1
3	Hexagon bolt	1	24	Roots	2
4	Handle	1	25	Roots shaft(short)	1
5	Oil seal	1	26	Roots shaft(long)	1
6	Stop ring	1	27	Housing	1
7	Bearing	2	28	Outside cover	1
8	Screw(for gear cover)	10	29	Screw(for outside cover)	10
9	Bearing collar	1	30	Bearing cap	2
10	Gear cover	1	31	Spout	1
11	Rhomic bolt	1	32	Hose clamp	1
12	O-ring	1	33	Plastic clip	1
13	Reinforcement shaft	1	34	Delivery hose(PE)	1
14	Reinforcement gear	1	35	Strainer	1
15	Screw(for long Roots shaft)	1	36	L shape	1
16	Pinion gear	1	37	Bung adaptor	1
17	Timing gear	2	38	Filter body	1
18	Taper pin	4	39	Suction pipe	1/2/3
19	Bearing	4	40	Rubber unit	2
20	Oil seal	4	41	Nozzle	1
21	Cover packing	3	42		