

# DIAPHRAGMS HAND PUMP STAINLESS STEEL Type PMP, PMF



# Stainless steel hand diaphragm pump

*Self-priming high capacity diaphragm hand pumps for dense or delicate liquids, liquids with solids in suspension and oil.*

*PMB and PMF hand pumps are self-priming. They are entirely in die-pressed stainless steel, and their technical features allow high yields (from 40 to 120 lt/min) compared to their small size and light weight (from 3 to 12 kg).*

*They can also operate with liquids with large solid bodies in suspension without damaging the pump. They require no maintenance and are easy to clean.*

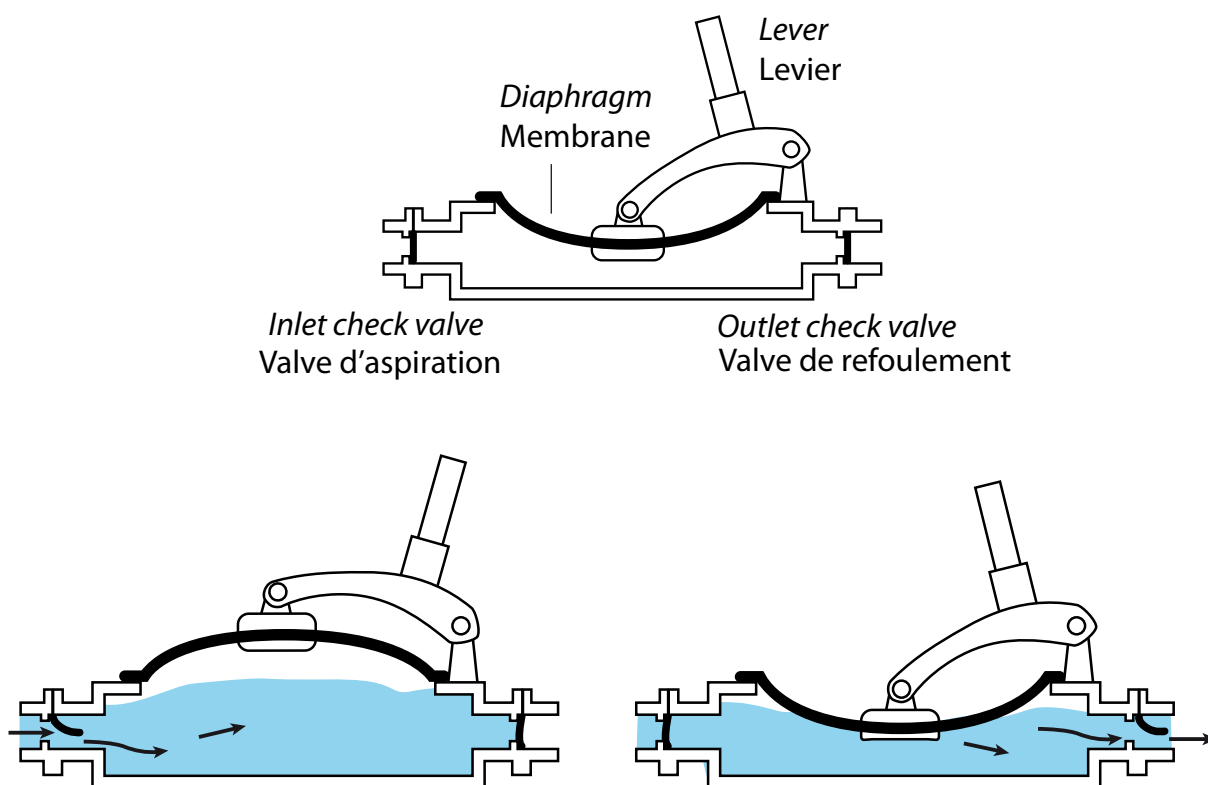
## Application field

Suitable for agricultural and food industry

## Construction

- Diaphragm pumps, without impellers or organs in motion.
- Hand-operated lever
- Pumping doesn't damage the liquid because there is no moving pieces or impeller to beat it.
- Die-pressed stainless steel AISI 304
- Hose connectors, in nylon, from 30 to 40 mm.
- Diaphragms and pump valves are made of neoprene, so as not to alter the pumped liquids.
- PM-F have a long suction pipe in PVC to reach the bottom of the barrel (beer, wine, juice..)

## Operation



# PMB

*Stainless steel hand diaphragm pump*



## PMB 300

The largest PMB hand pump.  
Big capacity.  
For dense liquid with solids in suspension.  
Easy movable, thanks to its trolley



## PMB

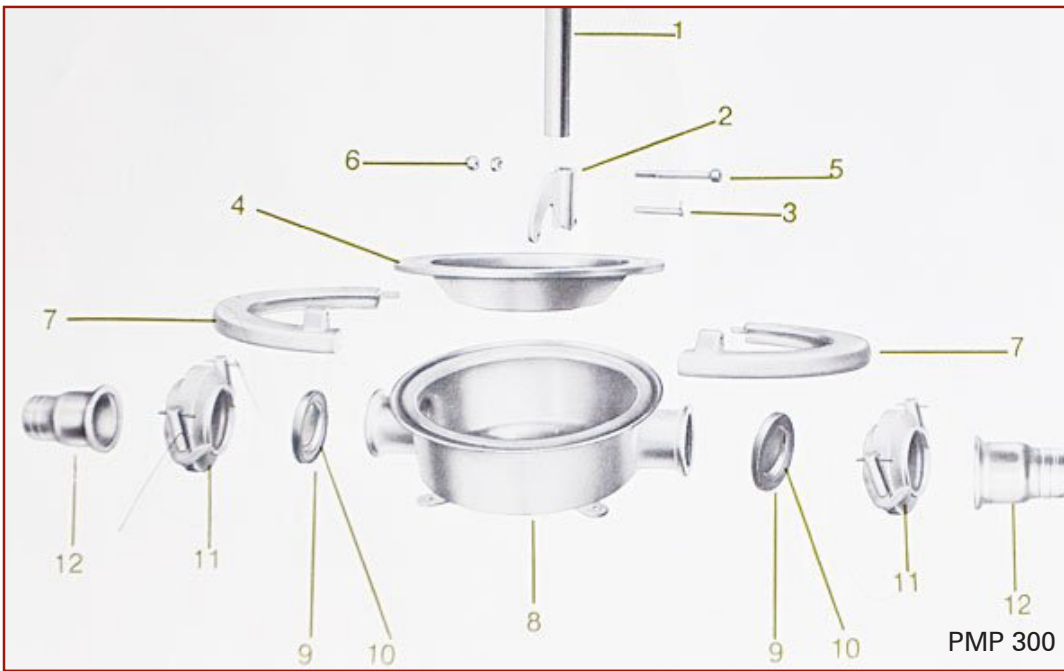
Medium size for medium capacity.  
Mobile



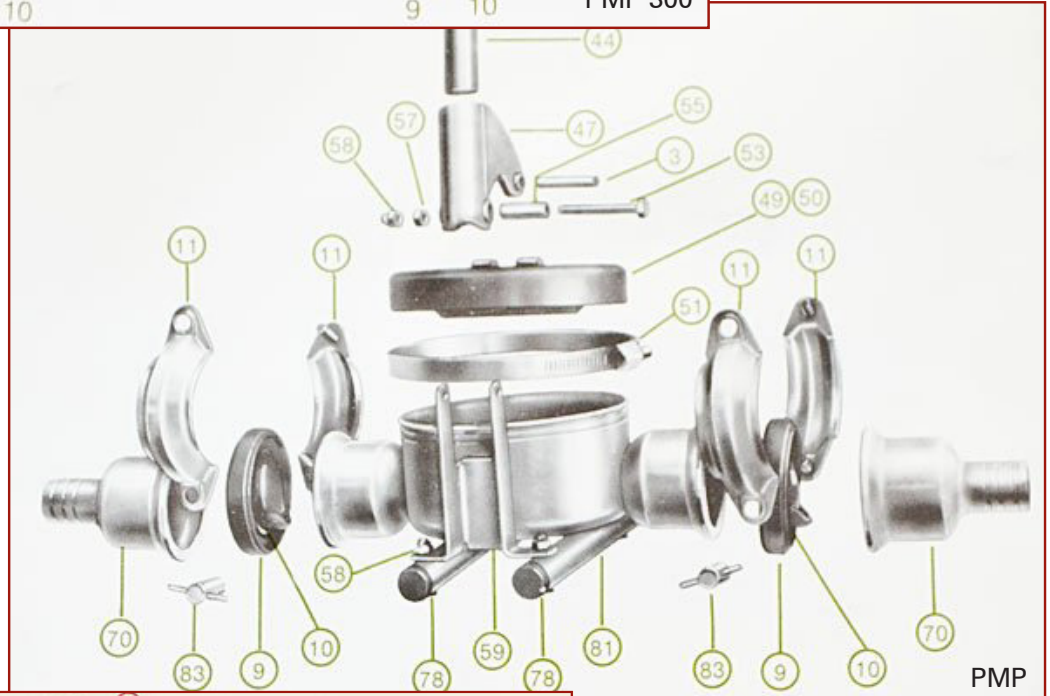
## Mini PMB

Little pump  
To be fixed with screws

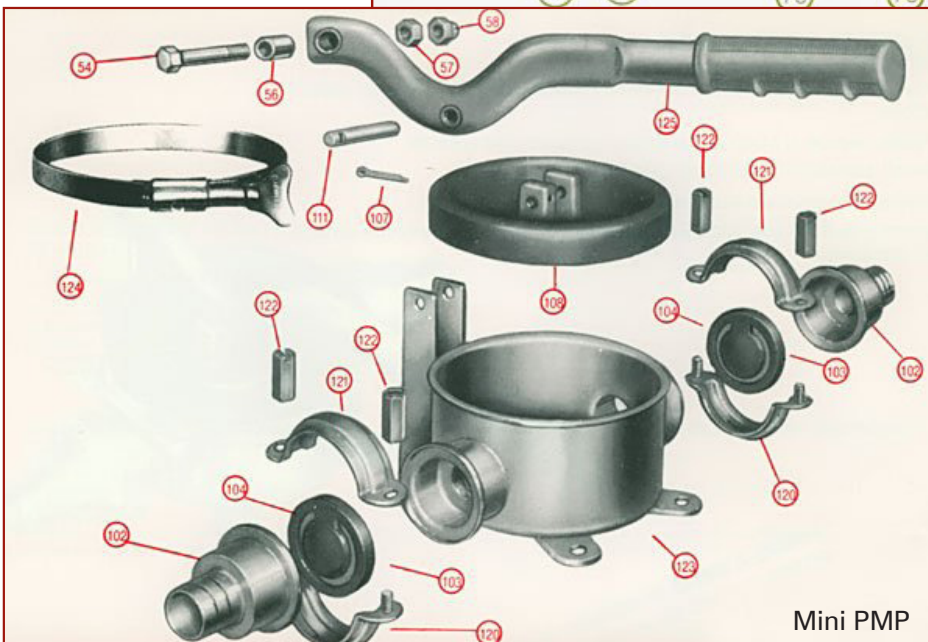
	PMB 300	PMB	Mini PMB
Rate of flow per stroke	4 l.	2 l.	1 l.
Capacity	100/120 l/mn	50/60 l/mn	30/40 l/mn
Time to drain a 200 L tank	2 minutes	4 minutes	7 minutes
Liquid's temperature	70 °C max	70 °C max	70 °C max
Couplings	Ø 40 mm	Ø 30 mm	Ø 30 mm
Self priming	up to 4 m	up to 4 m	up to 4 m
Ø pump	220 mm	130 mm	110 mm
Weight	10 kg with trolley ( < 7 kg pump only)	less than 4 Kg	less than Kg



PMP 300



PMP



Mini PMP

# PM-F

*Stainless steel hand diaphragm pump*



## PM-F

Stainless steel hand pump with a long suction pipe to reach the bottom of the barrel (beer, wine, juice..)

<b>Rate of flow per stroke</b>	1 l.
<b>Capacity</b>	30/40 l/mn
<b>Time to drain a 200 L tank</b>	6 minutes
<b>Liquid's temperature</b>	70 °C max
<b>Couplings</b>	Ø 30 mm
<b>Self priming</b>	jusqu'à 4 m
<b>Suction pipe Length</b>	800 mm
<b>Ø pump</b>	110 mm
<b>Weight</b>	moins de 4 Kg

